



ecopod

From urban backyards to rugged coasts, ecopods are designed with you in mind and proudly;

Built for Life

Sleepouts • Granny Flats

Guest Accommodation • Offices

Tiny Homes • Baches • & More

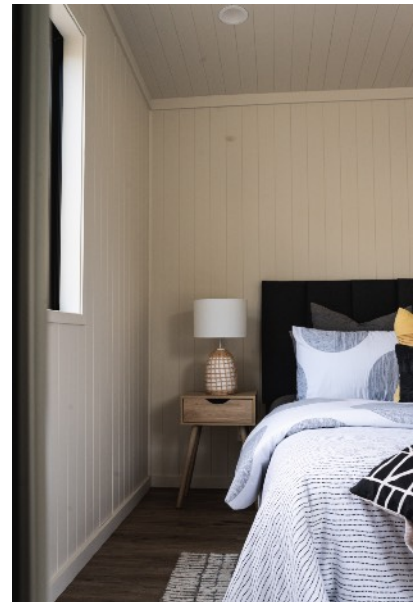
sales@ecopod.co.nz • 0800 ECOPOD

90 Rame Road, Greenhithe, Auckland

Our Offering

Simple and high quality, ecopods are architecturally designed for longevity and functionality. From 10 to 100 square meters, we customise to suit your needs.

Built with timber framing and cladding, steel roofing and aluminium joinery, ecopods are fully insulated and built to code. Installed by truck and crane onto pile foundations or temporary blocks.



Standard Features

MDF or ply wall lining
Weathertex cladding
Laminate flooring
Double-glazed joinery

Hot water cylinder
Melteca cabinets
Laminate bench top
Stainless-steel sink

LED Lighting
Chrome taps and handles
Shower w sliding door
Ceramic Toilet suite

We offer a range of upgrades to suit different tastes and budgets but our standard specifications perform well for durability, affordability and sustainability. Ask us about what options we offer.

Our Process

There are three main project approaches:

1. No Consent (lead time is about 3 months)

If it's temporary and transportable on wheels, or less than 30m² with no plumbing then it may be exempt from Consent. Talk with our team for further information.

2. Consented Building (lead time is about 5 months)

Auckland Council certifies the building envelope to the specified standard. The site consent is handled separately or postponed.

3. Consented Site (lead time is about 8-12 months)

The full monty, requiring site services plans, foundations engineering, decks and steps. May also require Resource Consent.

The 6 steps to owning your ecopod:

1. Choose your ecopod

View our standard plans online and customise to your needs. Select upgrades and decide which Consent pathway to take.

2. Apply for a PIM

Apply for a Project Information Memorandum (PIM) from your local council if building consent is required.

3. Finalise contract

The Sales Agreement is drawn up and, once signed, we issue the deposit invoice.

4. Planning

We compile the documentation for production and submit to Council as required.

5. Construction begins

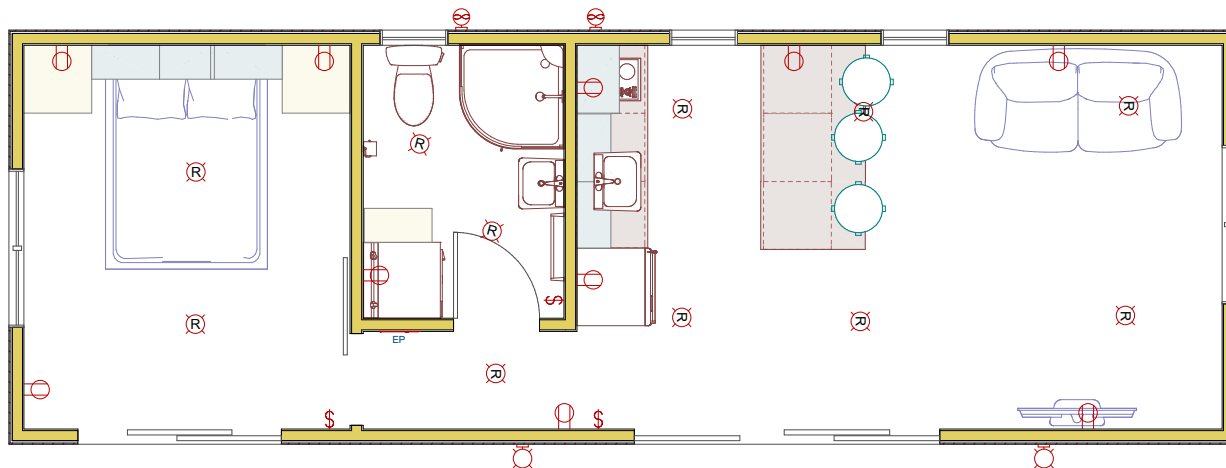
The factory build begins while onsite works are being completed. Progress payment due when the ecopod is closed in.

6. Enjoy your ecopod!

We truck and install your ecopod, and hand over the keys. Site works completed and final invoice issued.

Example Project Price

For a standard **Bethells** 10.8 x 3.6 ecopod



1. No Consent (~3 months)

Price of ecopod	High Wind Zone, on timber bearers (ex. appliances)	\$158,650
Transport to Akl site	Hiab truck and a pilot vehicle	\$3,500
Temp site connection	Caravan plug, lead and macerator pump supplied	\$4,850
Subtotal* inc. gst	NB: Seek advice if not getting Consent	\$167,000

2. Consented Building (+~2 months)

Ex-factory consent	Architect and Council Fees	\$12,500
Subtotal* inc. gst	Inc. all the above	\$179,500

3. Consented Site (+~4 months)

Consultants	Survey, geotech, wastewater design, underground services location, architect (ex. Resource Consent)	\$24,550
Foundations	(Assuming level, firm site)	\$8,450
Access	15sqm decking and steps (assuming no handrails)	\$11,750
Services connections	Power, potable water & wastewater	\$12,000
Subtotal* inc. gst	Site services only	\$56,700

Total* inc. gst	(Ex. temp site connection)	\$231,350
------------------------	-----------------------------------	------------------

*Priced according to March 2022 materials costs, subject to change according to current costs and site conditions.

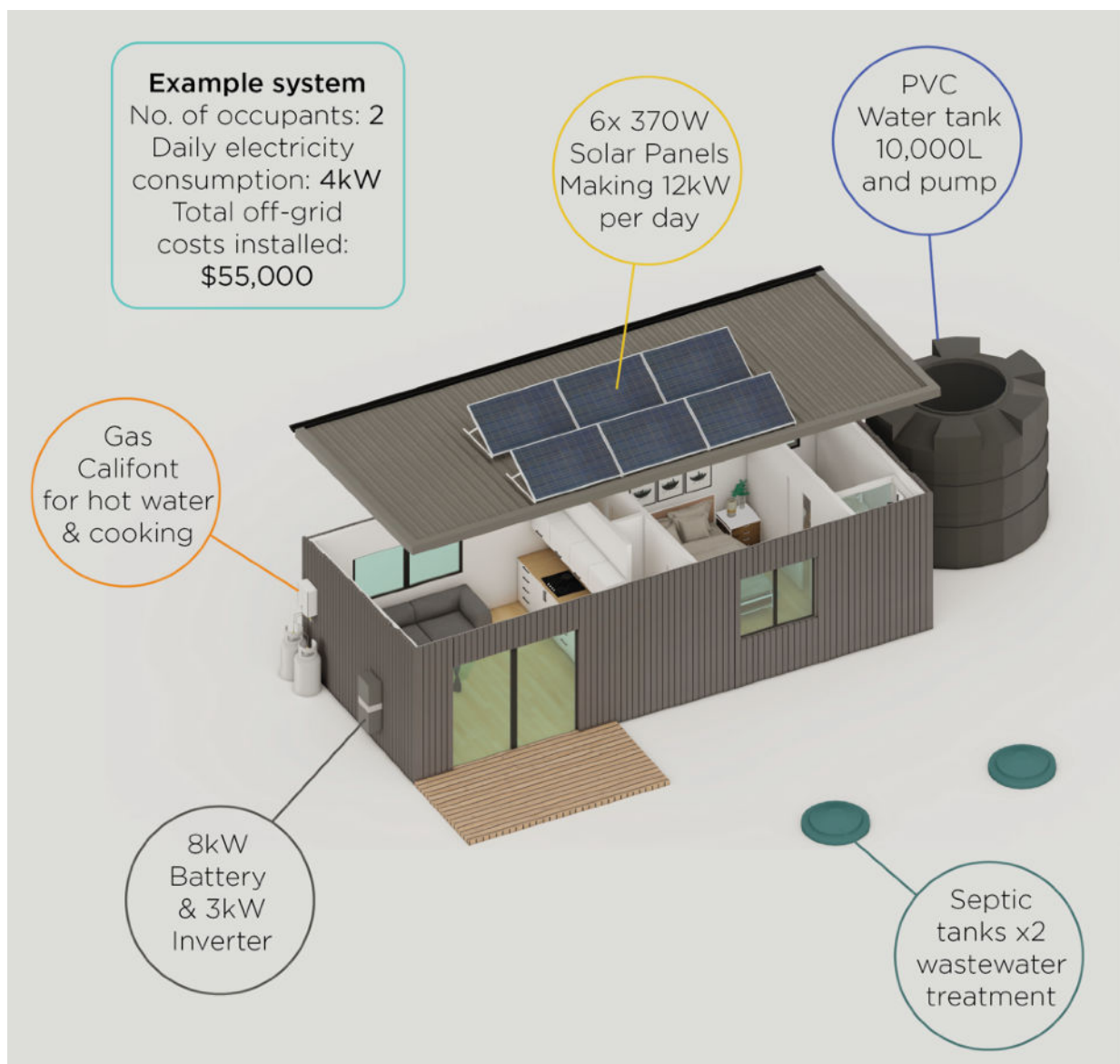
Going Off-Grid

Going off-grid requires attention to your energy, potable water and wastewater systems.

In conjunction with certified electricians, solar and wastewater professionals, we design a system to meet your unique requirements.

The first step is to calculate upfront what your system requirements are. Getting the right system will save cost, hassle and headaches.

There are several ways to help manage an off-grid system, such as use of backup generators, composting toilets with greywater treatment only, fireplaces and thermal hot water tubes. Each situation requires a customised approach.



Graphic illustrating an off-grid eco-pod requiring a Consented Site.



FAQ's

What makes your pods 'eco'?

We take the 'eco' in our name to stand for both economical and ecological. A recent lifecycle analysis showed, of several possible build methods used for transportable homes, ours is the most sustainable over a 50 year lifetime.

Do you sell kit-sets or flat-packs?

We choose not to do this as we don't want to compromise on quality and to ensure Code Compliance with all our projects. Sometimes, however, pods come in separate modules and joined onsite if access is tricky. Onsite build is also a possibility if necessary but only within Auckland region and priced accordingly.

How do we connect to services?

We work with a range of specialists to provide practical options to get connected. For temporary installations, we supply a caravan plug, hose inlet and a macerator pump if necessary for connection to existing services.

Can they go on a sloping section?

Yes, no problem. We use timber or steel pile foundations which can go on most terrain. The main constraints are access for install and land stability which we ensure meet engineered requirements prior to installation.

Do you offer finance?

We can recommend third-party banks and finance brokers who will offer you options to finance your ecopod project. Talk to our team to find out more.



Testimonials

I've just come through the first winter in my Pod which has been good. The appeal of living in a place like this, for a young person starting out, is it's hard to get onto the property ladder. Rather than paying rent the benefit of starting off small is you can put cash in the bank for a long term solution to work towards buying a place.

Jacob, Cromwell, Central Otago

The craftsmanship and detail on the pods is of high quality, in particular the joinery and massive sliding doors. We wanted our pod to look like an extension of our house so we had positioned right up the side of it by the crew and painted the same colour as the house, so it just looks like it's been there forever. I researched for months to find the best pod that didn't look like a weird addition plonked on the section. We highly recommend Ecopod to anyone.

Jane, Mount Maunganui, Tauranga

We did a lot of research on transportable baches and couldn't beat Ecopod for style, craftsmanship and price. We worked with Ecopod to shape a pod that was perfect for our section! It was great to sit down with the team and plan everything from the layout, aluminium joinery, to little things like the location of power points and kitchen shelving.

Matt Whangapoua, Coromandel Peninsula

Thank You!

For enquiries, further information, plans and pricing, visit

ecopod.co.nz



Or scan this QR code.

ecopod
Built for Life

sales@ecopod.co.nz • 0800 ECOPOD

90 Rame Road, Greenhithe, Auckland

Ecopod is a member of the following associations:

